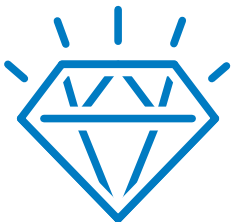




Multi-compartment Trays & Lids

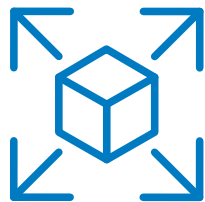


Crystal Clear



Showcases food to highlight freshness and quality ingredients.

Versatile



A wide variety of shapes, sizes, cell counts and lid designs available for every occasion.

Strong



Designed to stand up to stacking and handling in transport for optimal food protection.

Recyclable



Made with fully recyclable PET, providing a strong beginning & end of life story.

Inspiration in Every Package™



Rectangular Trays, Lids & Combos

Crystal clear lids showcase foods

Tight corner/side seals ensure leak resistance

Wide variety of volumes and configurations, including upside down and right side up designs

Sturdy, stackable bases and flat lids with easy open tabs

Both clear and black bottom options available

Dip Cup Designs: Right Side Up

Dip Cup Designs: Upside Down

1 Round

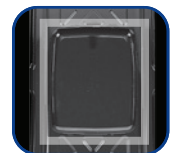
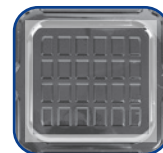
1 Round w/
Split Comp.

2 Round

Round Area

Square Area

Rectangular Area





Rectangular Trays, Lids & Combos



11" x 7" Rectangular Tray, Lid & Combos

Image	Part No.	Description	Material	Color Tray/Lid	Height (in.)	Cap. Excluding Dip Cup (fl. oz.)	Case Wt. (lbs.)	Sleeve Pack	Case Pack	Cube (ft ³)	Ti x Hi (TL)
	1321	3-Comp. Tray	PET	Clear	2.25	60	18.86	200	200	3.44	6 x 4
	1140	Lid for 3-Comp. Tray	PET	Clear	0.50	48	12.83	200	200	3.44	6 x 2
A	1174	Single Comp. Tray w/ Dip Cup and Lid	PET	Clear/ Clear	2.25	55	21.62	100	100	3.44	6 x 4
B	1297	4-Comp. Tray w/ Dip Cup and Flat Lid	PET	Clear/ Clear	1.63	48	19.43	100	100	3.44	6 x 4
C	1644	6-Comp. Tray w/ Dip Cup and Flat Lid	PET	Clear/ Clear	1.25	-	19.81	100	100	3.44	6 x 4
D	1141	4-Comp. Tray w/ Dip Cup and Flat Lid	PET	Clear/ Clear	2.25	48	14.61	100	100	3.44	6 x 4
E	1751	4-Comp. Tray w/ Dip Cup and Flat Lid	PET	Clear/ Clear	2.25	-	19.43	100	100	3.44	6 x 4
F	1276	6-Comp. Tray w/ Dip Cup and Lid	PET	Clear/ Clear	2.25	-	21.63	100	100	3.44	6 x 4
G	1340	6-Comp. Upside Down Container	PET	Black/ Clear	1.25	-	16.22	100	100	3.44	6 x 4



Rectangular Trays, Lids & Combos



A



B



C



D



E

14" x 11" Rectangular Tray, Lid & Combos

Image	Part No.	Description	Material	Color Tray/Lid	Height (in.)	Cap. Excluding Dip Cup (fl. oz.)	Case Wt. (lbs.)	Sleeve Pack	Case Pack	Cube (ft ³)	Ti x Hi (TL)
A	1411	6-Comp. Tray w/ 2 Dip Cups and Flat Lid	PET	Black	2.25	96.00	21.00	60	60	3.44	6 x 4
B	1781	6-Comp. PET Tray w/ Dip Cup	PET	Clear	3.30	120.00	34.17	100	100	3.76	6 x 4
C	1683	Lid for 6-Comp. PET Tray w/ Dip Cup	PET	Clear	0.50	-	22.85	200	200	3.44	6 x 4
	1191	4-Comp. Tray w/ Dip Cup and Lid	PET	Clear/ Clear	2.00	72.00	17.22	60	60	3.44	6 x 4
D	1118	4-Comp. Tray w/ Dip Cup and Lid	PET	Clear/ Clear	2.25	96.00	18.57	60	60	3.44	6 x 4
	1736	4-Comp. Tray w/ Dip Cup and Lid	PET	Clear/ Clear	2.75	110.00	20.28	60	60	3.44	6 x 4
E	1228	4-Comp. Tray w/ Dip Cup and Lid	PET	Clear/ Clear	3.13	128.00	18.80	60	60	3.44	6 x 4



Rectangular Tray / Lid Combos



A



B



C



D



E

14" x 11" Rectangular Tray & Lid Combos

Image	Part No.	Description	Material	Color Tray/Lid	Height (in.)	Cap. Excluding Dip Cup (fl. oz.)	Case Wt. (lbs.)	Sleeve Pack	Case Pack	Cube (ft ³)	Ti x Hi (TL)
A	1231	5-Comp. Heat Sealable Tray w/ Dip Cup, Split Comp. and Lid	PET	Clear/ Clear	2.75	110.00	20.31	60	60	3.44	6 x 4
	1358	6-Comp. Tray w/ Dip Cup and Lid	PET	Clear/ Clear	2.25	90.00	20.31	60	60	3.44	6 x 4
	1247	6-Comp. Tray w/ Dip Cup and Lid	PET	Clear/ Clear	2.25	96.00	17.25	60	60	3.44	6 x 4
B	1784	6-Comp. Tray w/ Dip Cup and Lid	PET	Black/ Clear	2.00	96.00	18.41	60	60	3.44	6 x 4
C	1384	6-Comp. Upside Down Tray w/ Round Dip Area and Lid	PET	Black/ Clear	1.25	96.00	16.17	60	60	3.44	6 x 4
D	1334	6-Comp. Upside Down Tray w/ Rectangular Dip Area and Lid	PET	Black/ Clear	1.56	-	15.99	60	60	3.44	6 x 4
E	1336	6-Comp. Upside Down Tray w/ Square Dip Area and Lid	PET	Black/ Clear	1.56	-	18.01	60	60	3.44	6 x 4



Round Trays & Lids

Wide variety of compartment and dip cup options

Lids with easy open tabs

Positive rim seals ensure leak resistance

Sturdy, stackable bases



Lid Styles

Ring



Flat



Rose



Starburst



A



B



C



D



E



F

Round 10.25" Tray & Matching Lids

Image	Part No.	Description	Material	Color Tray/Lid	Dia. (in.) x Ht. (in.)	Cap. Excluding Dip Cup (fl. oz.)	Case Wt. (lbs.)	Sleeve Pack	Case Pack	Cube (ft ³)	Ti x Hi (TL)
A	1625	6- Comp. Tray	PET	Clear	10.25 x 1.80	48.00	10.60	100	100	2.77	8 x 5
B	1146	Ring Lid	PET	Clear	10.25 x 0.65	-	12.00	200	200	3.79	6 x 4
C	1188	Rose Pattern Lid	PET	Clear	10.25 x 1.40	-	15.00	200	200	3.79	6 x 4

Round 13" Trays & Matching Lids

Image	Part No.	Description	Material	Color Tray/Lid	Dia. (in.) x Ht. (in.)	Cap. Excluding Dip Cup (fl. oz.)	Case Wt. (lbs.)	Sleeve Pack	Case Pack	Cube (ft ³)	Ti x Hi (TL)
D	1768	4-Comp. Tray w/Dip Cup	PET	Clear	13.00 x 2.25	64.00	300.00	1320	1320	39.13	1 x 1
E	1416	5-Comp. Tray w/Dip Cup	PET	Clear	13.25 x 3.92	156.00	18.18	80	80	3.00	9 x 4
	1600	Ring Lid for 13.25" Tray	PET	Clear	13.38 x 0.75	-	20.80	200	200	3.00	9 x 4
F	1769	Ring Lid for 13.00" Tray	PET	Clear	13.00 x 0.75	-	200.00	1980	1980	39.13	1 x 1



Round Trays & Lids



Round 10.25" Tray & Lid Combos

Image	Part No.	Description	Material	Color Tray/Lid	Height (in.)	Cap. Excluding Dip Cup (fl. oz.)	Case Wt. (lbs.)	Sleeve Pack	Case Pack	Cube (ft ³)	Ti x Hi (TL)
	1378	3-Comp. Tray w/Rose Pattern Lid	PET	Clear/Clear	2.63	42.00	20.39	100	100	3.79	6 x 4
	1169	6-Comp. Tray w/Dip Cup and Ring Lid	PET	Clear/Clear	1.80	56.00	20.60	100	100	3.79	4 x 6
	1636	6-Comp. Tray w/Flat Lid	PET	Clear/Clear	1.80	48.00	15.65	100	100	3.79	6 x 4
A	1049	4-Comp. Juice Catcher Tray w/Dip Cup and Ring Lid	PET	Clear/Clear	2.25	48.00	14.42	100	100	3.79	6 x 4
	1395	3-Comp. Tray w/Rose Pattern Lid	PET	Clear/Clear	1.75	54.00	9.13	100	100	3.79	6 x 4
B	1773	3-Comp. Tray w/Starburst Lid	PET	Clear/Clear	1.75	54.00	9.13	100	100	3.79	6 x 4
	1314	3-Comp. Tray w/Ring Lid	PET	Clear/Clear	1.75	54.00	14.60	100	100	3.79	6 x 4
	1112	1-Comp. Tray w/Dip Cup and Ring Lid	PET	Clear/Clear	1.64	51.00	9.13	100	100	3.79	4 x 6
	1053	3-Comp. Tray w/Dip Cup and Ring Lid	PET	Clear/Clear	2.50	60.00	14.42	100	100	3.79	6 x 4
C	1046	4-Comp. Tray w/Ring Lid	PET	Clear/Clear	2.90	64.00	15.42	100	100	3.79	6 x 4
	1048	4-Comp. Tray w/Dip Cup and Ring Lid	PET	Clear/Clear	2.90	64.00	15.65	100	100	3.79	6 x 4
	1507	4-Comp. Tray w/Rose Pattern Lid	PET	Clear/Clear	2.25	64.00	9.13	100	100	3.79	6 x 4
D	1047	4-Comp. Tray w/Flat Lid	PET	Clear/Clear	2.25	64.00	14.86	100	100	3.79	6 x 4
	1595	4-Comp. Tray w/Dip Cup and Flat Lid	PET	Clear/Clear	2.50	64.00	14.73	100	100	3.79	6 x 4
E	1357	4-Comp. Tray w/Rose Pattern Lid	PET	Clear/Clear	3.00	96.00	16.12	100	100	3.79	6 x 4



Round Trays & Lids



Round 13.25" Tray & Lid Combos

Image	Part No.	Description	Material	Color Tray/Lid	Height (in.)	Cap. Excluding Dip Cup (fl. oz.)	Case Wt. (lbs.)	Sleeve Pack	Case Pack	Cube (ft ³)	Ti x Hi (TL)
A	2047	4-Comp. Tray w/Dip Cup and Ring Lid	PET	Black/Clear	1.75	72.00	19.00	50	50	3.00	9 x 4
B	1192	4-Comp. Tray w/Dip Cup and Ring Lid	PET	Clear/Clear	1.75	72.00	19.00	50	50	3.00	9 x 4
	2046	4-Comp. Tray w/Dip Cup and Ring Lid	PET	Black/Clear	2.02	88.00	19.00	50	50	3.00	9 x 4
C	1106	4-Comp. Tray w/Dip Cup and Ring Lid	PET	Clear/Clear	2.38	104.00	19.00	50	50	3.00	9 x 4
D	1104	4-Comp. Tray w/Dip Cup and Ring Lid	PET	Clear/Clear	2.80	124.00	18.49	50	50	3.00	9 x 4
	1278	4-Comp. Tray w/Square w/Dip Cup and Ring Lid	PET	Clear/Clear	2.80	140.00	18.49	50	50	3.00	9 x 4
	1103	4-Comp. Tray w/Dip Cup and Ring Lid	PET	Clear/Clear	3.94	176.00	18.50	50	50	3.00	9 x 4
E	1241	Heat Sealable PET 5-Comp. Tray w/Dip Cup and Ring Lid	PET	Clear/Clear	3.15	120.00	19.00	50	50	3.00	9 x 4

Round 15.25" Tray & Lid Combos

Image	Part No.	Description	Material	Color Tray/Lid	Height (in.)	Cap. Excluding Dip Cup (fl. oz.)	Case Wt. (lbs.)	Sleeve Pack	Case Pack	Cube (ft ³)	Ti x Hi (TL)
F	1115	5-Comp. Tray w/Dip Cup and Ring Lid	PET	Clear/Clear	3.00	180.00	16.00	20	20	2.80	6 x 5

Polyethylene Terephthalate (PETE)

Temperature Range



Product information is subject to change. Note: These are typical values, based on testing and published guidelines. They are not intended for use as limiting specifications nor as a substitute for product testing under your specific conditions. D&W Fine Pack assumes no liability whatsoever in connection with the use of information or findings contained herein.



D&W Fine Pack LLC • 777 Mark Street • Wood Dale, Illinois 60191
 Tel. 877.423.3937 • www.dwfinepack.com
 © 2025 D&W Fine Pack LLC, All Rights Reserved

To place an order, please contact our customer service department at 1-800-849-4004.

Inspiration in Every Package™

03/31/2025